



Michigan Developmental
Disabilities Institute

Enhancing quality
of life through
inclusive communities

WAYNE STATE UNIVERSITY

MI-DDI is where you are

MI-DDI is a catalyst for collaboration, innovation, and systems change to advance the self-determination and inclusion of people with disabilities in all aspects of community.

Welcome to MI-DDI

MI-DDI is Michigan's University Center for Excellence in Developmental Disabilities (UCEDD) and is a part of a national network working together to achieve a shared vision where **all people – including individuals with disabilities – participate fully in their communities.**

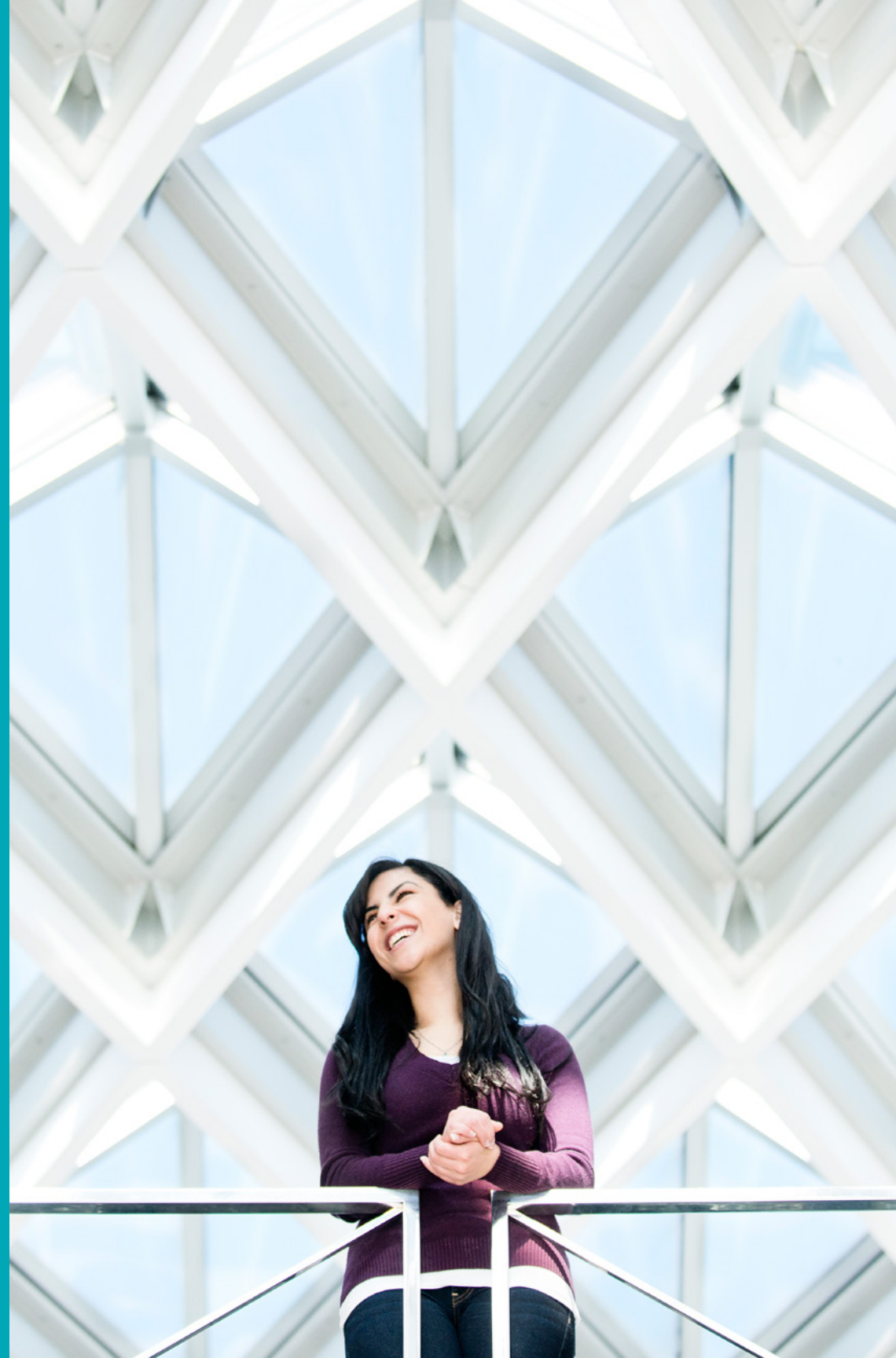
Our mission is to contribute to the development of inclusive communities and the quality of life for people with disabilities and their families.

Our programs are based on the values of cultural respect, empowerment, and self-determination.

What is a UCEDD?

University Centers for Excellence in Developmental Disabilities (UCEDD) exist in every state and U.S. territory to serve as a resource in the areas of community support and training, information dissemination, education, research and evaluation, and services to meet the needs of people with developmental disabilities.

There are 67 UCEDDS across the United States and U.S. territories. As Michigan's UCEDD, MI-DDI is a leader when it comes to empowerment and self-determination.





Our core functions

At MI-DDI, we are dedicated to promoting meaningful experiences in every aspect of life. We develop cutting-edge programs through evidence-based data and training. Our staff members work together to support our four core functions:

- Community Support & Services
- Training & Education
- Research & Evaluation
- Information Dissemination

Our work includes many collaborations and is guided by stakeholder input. We assist community agencies and human service systems as they shift policies and procedures.



Community Support & Services

MI-DDI provides services, supports, and technical assistance through demonstration and model activities. Our Community Support activities include:

- Assisting organizations with person-driven, strategic planning in developing innovative, person-driven services
- Facilitating planning meetings and retreats for organizations
- Developing policy and practice analyses
- Applying legislative analysis
- Contributing to systemic reform



Research & Evaluation

Our Research and Evaluation Program promotes thoughtful investigation, evaluation, analysis of public policy and practice in areas that affect persons with disabilities and their families.

Examples of Research & Evaluation include:

- Participatory action research
- Quantitative and qualitative research
- Translational research
- Comprehensive evaluation of programs, models, and services

Information & Dissemination

With a network that reaches from the Upper Peninsula to the Lower Peninsula, and Michigan's west coast to its east coast, we are able to effectively share the latest on disability best practices as well as information and resources. The MI-DDI field staff is prepared to accommodate all who seek to increase their knowledge in regard to inclusion.

Training & Education

MI-DDI provides interdisciplinary, family and person-centered, culturally competent and community-based training that focuses on critical values, knowledge, and skills necessary to build inclusive communities. Continuing education of leadership, direct service, clinical, or other personnel serves to strengthen and increase capacity. We also educate policy makers, providers, and other community members on disability-related topics to help build capacity and improve service systems.



Building community through community

MI-DDI is part of a statewide DD network that includes the Michigan Developmental Disabilities Council and the Michigan Protection and Advocacy Services, Inc. This partnership of agencies is mandated by the Developmental Disabilities Act to empower individuals with disabilities and their families to influence the policies that impact their daily lives.





Make MI-DDI your DDI

When you become a part of our network, you become a catalyst for change in Michigan. We are always building new teams and starting new projects that are funded through federal, state, and local contracts as well as foundation grants. Here are just a few of our ongoing projects:

- Community Integration (e.g., Home and Community-Based Services)
- Satisfaction with Services (e.g., National Core Indicators)
- WSU Graduate Certificate Program
- Self Determination (e.g., Possibilities Video Series)

At MI-DDI, we have our finger on the pulse of areas of concern for people with disabilities, across their lifespan, across the state, and across all disabilities. Call us for guidance, technical assistance, and support.

A healthy start

MI-DDI and Wayne State University are pleased to announce that in 2016 we launched a Leadership Education in Neurodevelopmental and Other Related Disabilities (LEND) Maternal Child Health (MCH) Training Program, known as MI-LEND.

Funded by the Maternal and Child Health Bureau of the federal government, the program is a statewide partnership with five other Michigan universities. The goal of MI-LEND is to improve the health of Michigan's infants, children, and adolescents with disabilities. The program provides training to graduate-level students as well as pre- and post-doctoral students from multiple disciplines.

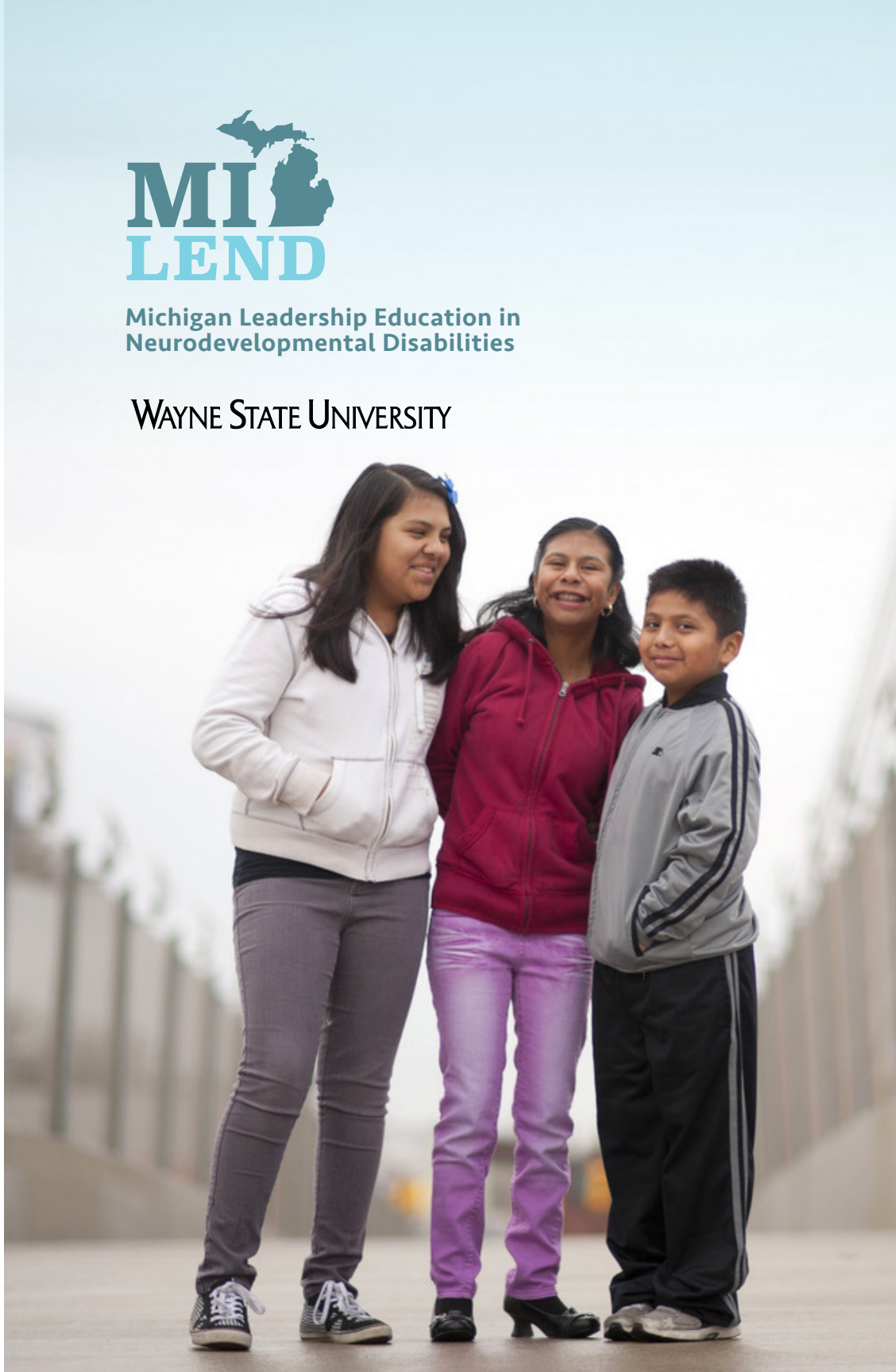
MI-LEND will increase the number of professionals with the knowledge and skills to provide evidence-based screening for and diagnosis and services to youth with autism and other neurodevelopmental disabilities.

Family members and individuals with disabilities will be actively involved in curriculum development and work with trainees to ensure a family-centered, culturally competent approach to improving the lives of children with neurodisabilities.



**Michigan Leadership Education in
Neurodevelopmental Disabilities**

WAYNE STATE UNIVERSITY



January 2017

MI-DDI Staff

Sharon M. Milberger, ScD

Director

smilberger@wayne.edu

Amal Alsamawi, MPH
Research Assistant
amal.alsamawi@wayne.edu

Michael Bray, MA, ED.S.
Associate Director of Dissemination
mikebray@wayne.edu

Ann Carrellas, LMSW
Associate Director for Research
ann.carrellas@wayne.edu

Elizabeth Elder, MBA
Business Manager
elizabeth.elder@wayne.edu

Julia Hernandez, BA
Research Assistant
juliaphernandez@wayne.edu

Elizabeth Janks, LMSW
Associate Director for Training & Education
e.janks@wayne.edu

Barbara W. LeRoy, PhD
Research Professor
B_Le_Roy@wayne.edu

June Malachowski, LLMSW
Research Assistant
june.malachowski@wayne.edu

Angela Martin, LMSW
Associate Director for Community Services
angela.martin@wayne.edu

Emily Milligan-Thompson, MEd
Dissemination & Data Coordinator
emily.milligan@wayne.edu

Preethy Samuel, PhD
Assistant Professor, Occupational Therapy
preethy@wayne.edu

Anita Saroli,
Secretary II
ab4773@wayne.edu

January 2017

Community Advisory Council (CAC)

Leslynn Angel / UCP Detroit

Elizabeth Bauer / Family Member / Consultant

Sherri Boyd / The Arc Michigan

Willie E. Brooks, Jr. / Oakland County Community Mental Health Authority

Ed Carlson / Self-Advocate

Elmer Cerano / Michigan Protection and Advocacy Services, Inc.

Vendela Collins / Michigan Developmental Disabilities Council

Russ Derry / Epilepsy Foundation of Michigan

Alice Hoffman / Michigan Department of Health and Human Services / Disability Health Unit

LuAnn Loy / Family Member / Partners in Policymaking

Amy Peckinpaugh / Michigan Department of Health and Human Services / Behavioral Health and Developmental Disabilities Administration Department of Health and Human Services

Janis Weckstein / Michigan Department of Education, Office of Special Education

Robert Stein / Michigan Assisted Living Association

David Taylor / Self-Advocate

Jane Turner / Children's Special Health Care Services, Michigan Department of Health and Human Services

Barbara Valliere / United Cerebral Palsy of Michigan

Janey Vermeulen / Self-Advocate

Rita Walters / Family Member / Michigan State University

Tom Watkins / Detroit Wayne Mental Health Authority

Susan Weller / Life Center, Inc.

Denise White-Perkins / Henry Ford Health System

Cynthia Wright / Michigan Rehabilitation Services



January 2017

Wayne State Board of Governors

Diane L. Dunaskiss

Marilyn Kelly

Paul E. Massaron

David A. Nicholson

Sandra Hughes O'Brien

Gary S. Pollard

Dana Thompson

Kim Trent

Stay in the loop

It is easy to keep in touch with MI-DDI. Our monthly e-newsletter shares breaking news, upcoming events, and more.

Sign up online by typing this link in your browser:
<http://middi.wayne.edu/newsletter.php>

Ready to learn more?

Phone (Toll Free): (888) 978.4334
Phone (Voice/TTY): (313) 577.2654
Fax: (313) 577.3770
middi@wayne.edu

Director: Sharon Milberger, Sc.D.

Developmental Disabilities Institute
Wayne State University
4809 Woodward Avenue, Suite 268
Detroit, MI 48202

Visit us at ddi.wayne.edu





MI-DDI is located on the campus of Wayne State University in the heart of Detroit's cultural center.

4809 Woodward Ave.

268 Leonard N. Simons Bldg. / Detroit, MI 48202

P: (313) 577-2654 Toll Free: (888) 979-4334 | ddi.wayne.edu

UCEDDs are authorized by the Developmental Disabilities and Bill of Rights Act of 2000 and funded by the Administration on Community Living within the US Department of Health and Human Services.